



'BRYMAROO'

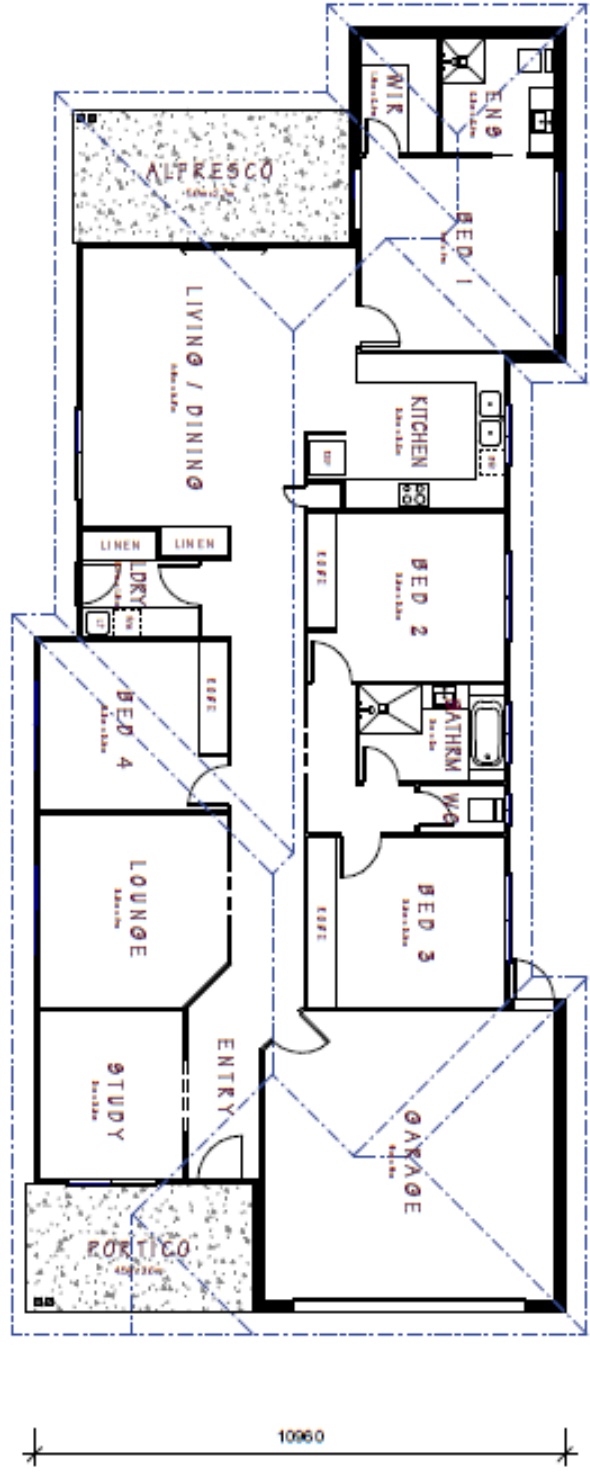
Designed to meet the requirements of a medium size family, includes a large private master suite tucked away at the back, this home also has plenty of spaces for the family to get together to discuss their day. A central kitchen looks into the living and dining rooms and large outdoor area. This long narrow home design is can be easily placed onto a block that is not the regular square shape.




DESIGN MASTER
HOMES
1300 459 150
www.designmasterhomes.com.au

BRYMAROO FLOOR PLAN

SCALE 1:100



AREA CALCULATIONS

| GROUND FLOOR | |
|--------------|----------|
| LIVING | 1023 sqm |
| DINING | 283 sqm |
| TOTAL | 1306 sqm |
| PORCH | 112 sqm |
| TERRACE | 148 sqm |






DESIGN MASTER
HOMES
1300 459 150
www.designmasterhomes.com.au