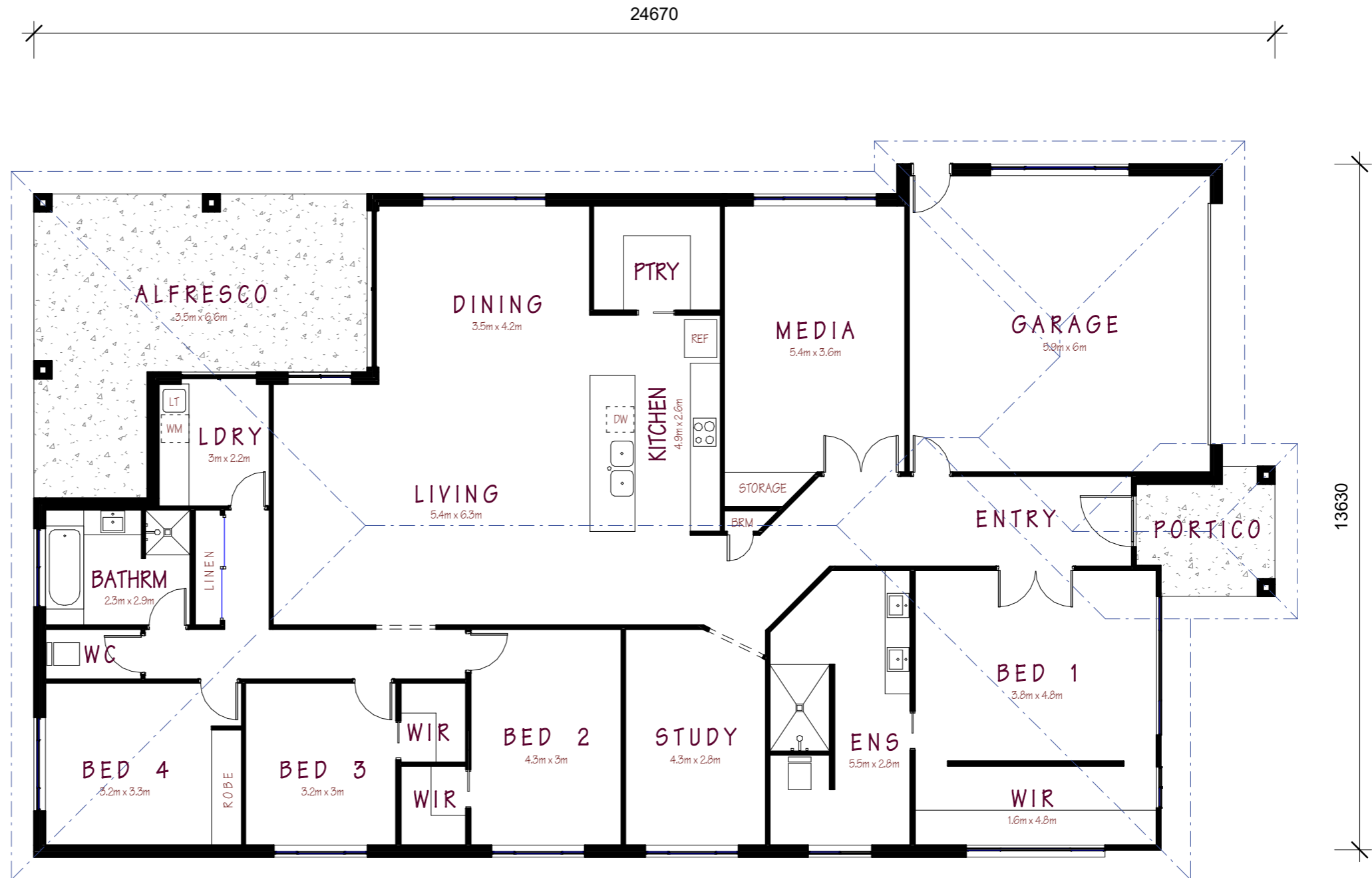




Preston - Peak Facade



AREA CALCULATIONS

GROUND FLOOR	
LIVING	= 238.5 sq.m
GARAGE	= 38.7 sq.m
TOTAL	= 277.2 sq.m
PORCH	= 5.8 sq.m
TERRACE	= 29.1 sq.m

P R E S T O N F L O O R P L A N

SCALE 1:100