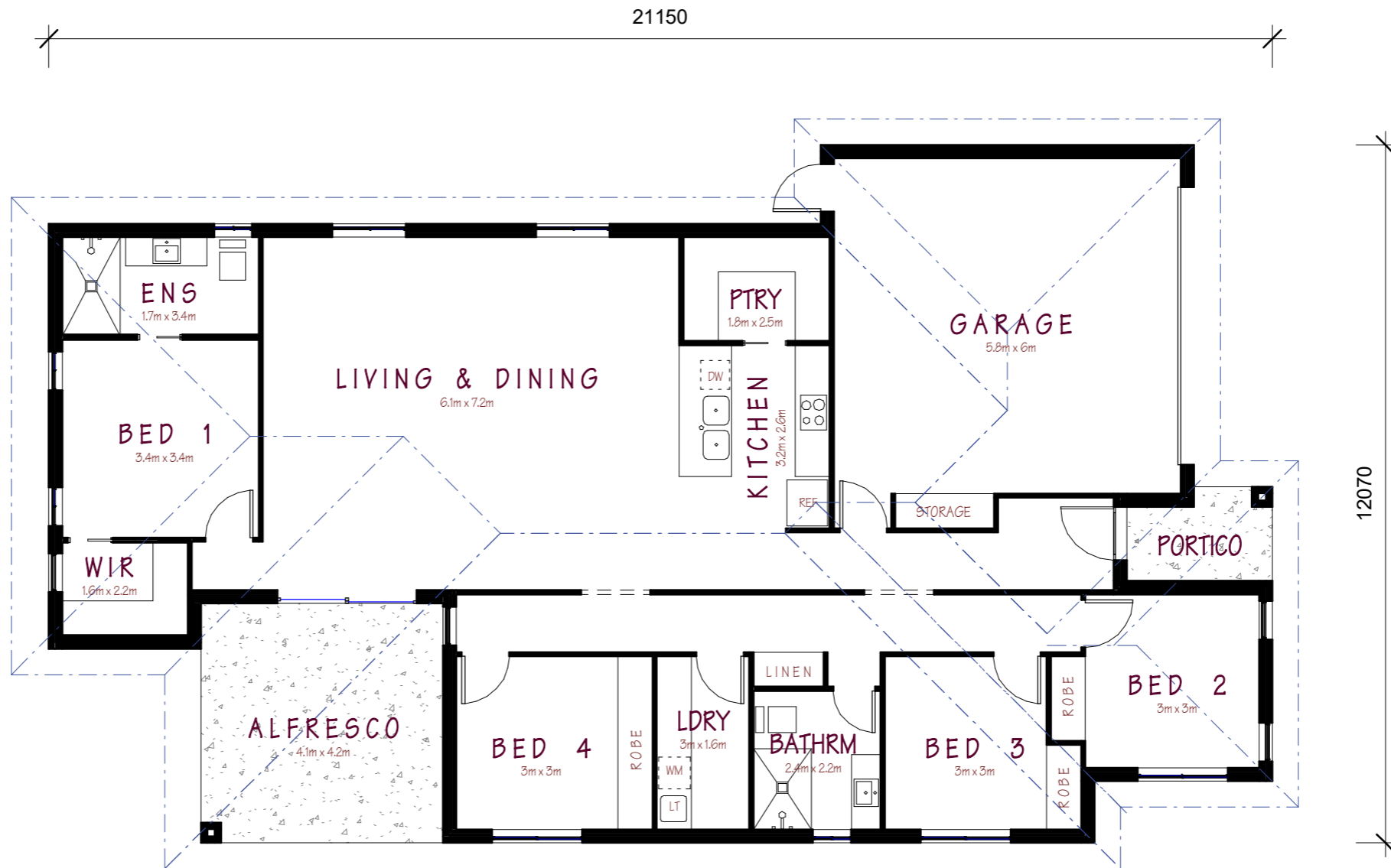




## Kincora - Ivy Facade



**AREA CALCULATIONS**

GROUND FLOOR	
LIVING	= 156.2 sq.m
GARAGE	= 39.8 sq.m
<b>TOTAL</b>	<b>= 196.0 sq.m</b>
PORCH	= 3.7 sq.m
TERRACE	= 17.3 sq.m

**KINCORA FLOOR PLAN**

SCALE 1:100