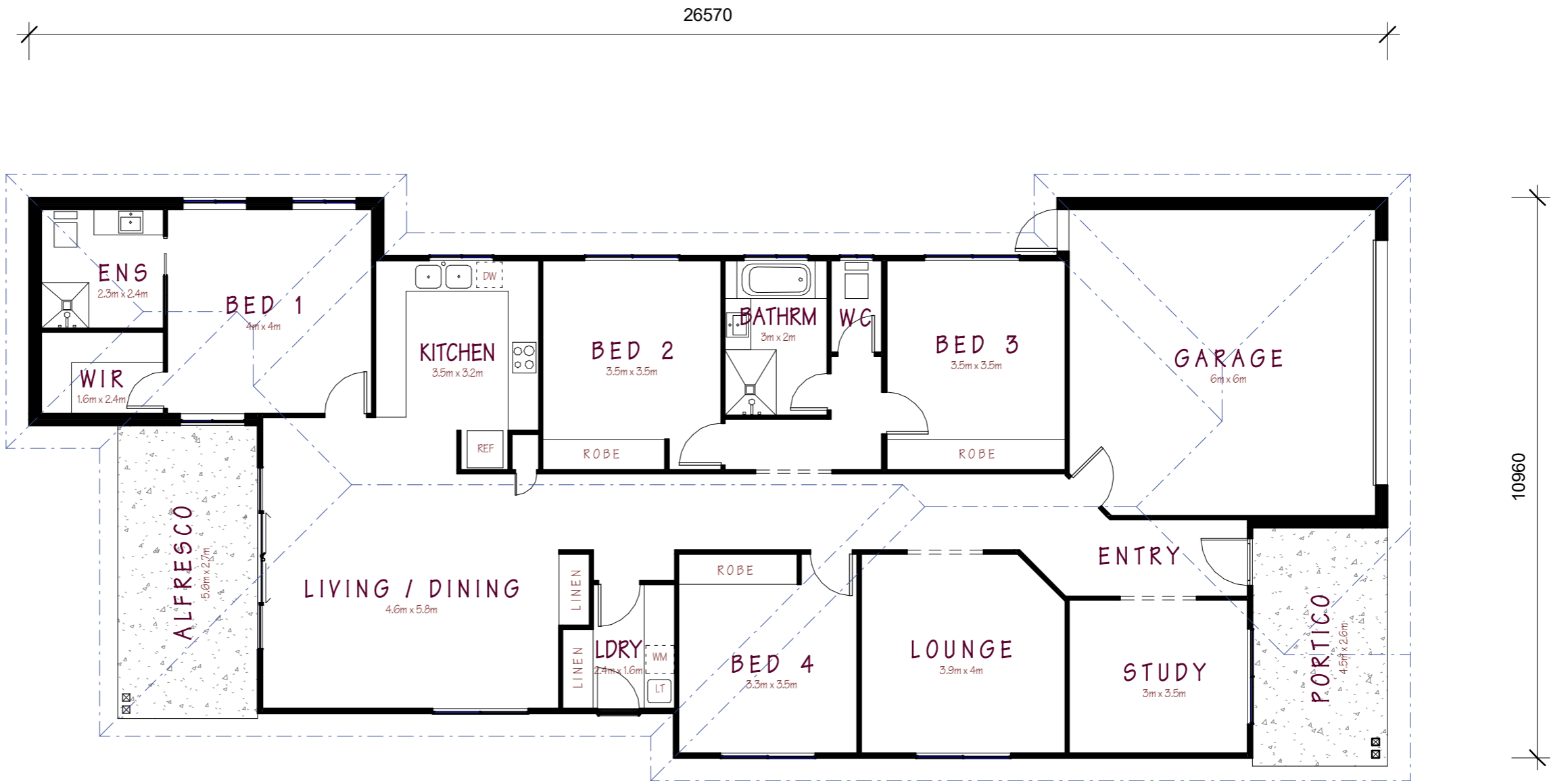




Brymaroo - Newport Facade



AREA CALCULATIONS

GROUND FLOOR	
LIVING	= 188.8 sq.m
GARAGE	= 39.3 sq.m
TOTAL	= 228.1 sq.m
PORCH	= 11.2 sq.m
TERRACE	= 14.9 sq.m

BRYMAROO FLOOR PLAN

SCALE 1:100